

16,000 SF

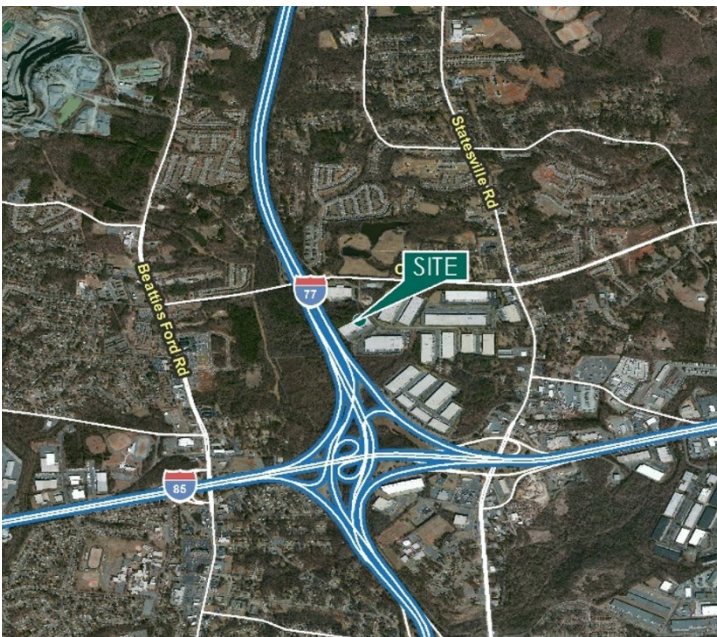
Industrial Space For Lease



Prologis Crosspoint Center Park



2700 Hutchison McDonald Road, Suite A
Charlotte, NC 28269 USA



LOCATION

- Immediate access to Interstate I-77 and I-85
- Minutes from Charlotte Douglas International Airport
- Strategic distribution location in North Submarket
- Close proximity to Charlotte Central Business District

FACILITY

- 100,000 total SF
- 16,000 available SF
- 1,725 office SF
- 20' clear height
- 2 dock doors (1 with EOD leveler)
- 200' building depth
- 40' x 40' column spacing
- ESFR sprinkler system
- Front load building
- 400 amp power
- End cap

ADVANTAGES AND AMENITIES

- Professionally landscaped, controlled park environment
- Prologis Clear Lease-a simplified lease that fixes operating and capital expenses for the entire lease term
- Efficient and cost-effective warehouse solutions through Prologis Essentials

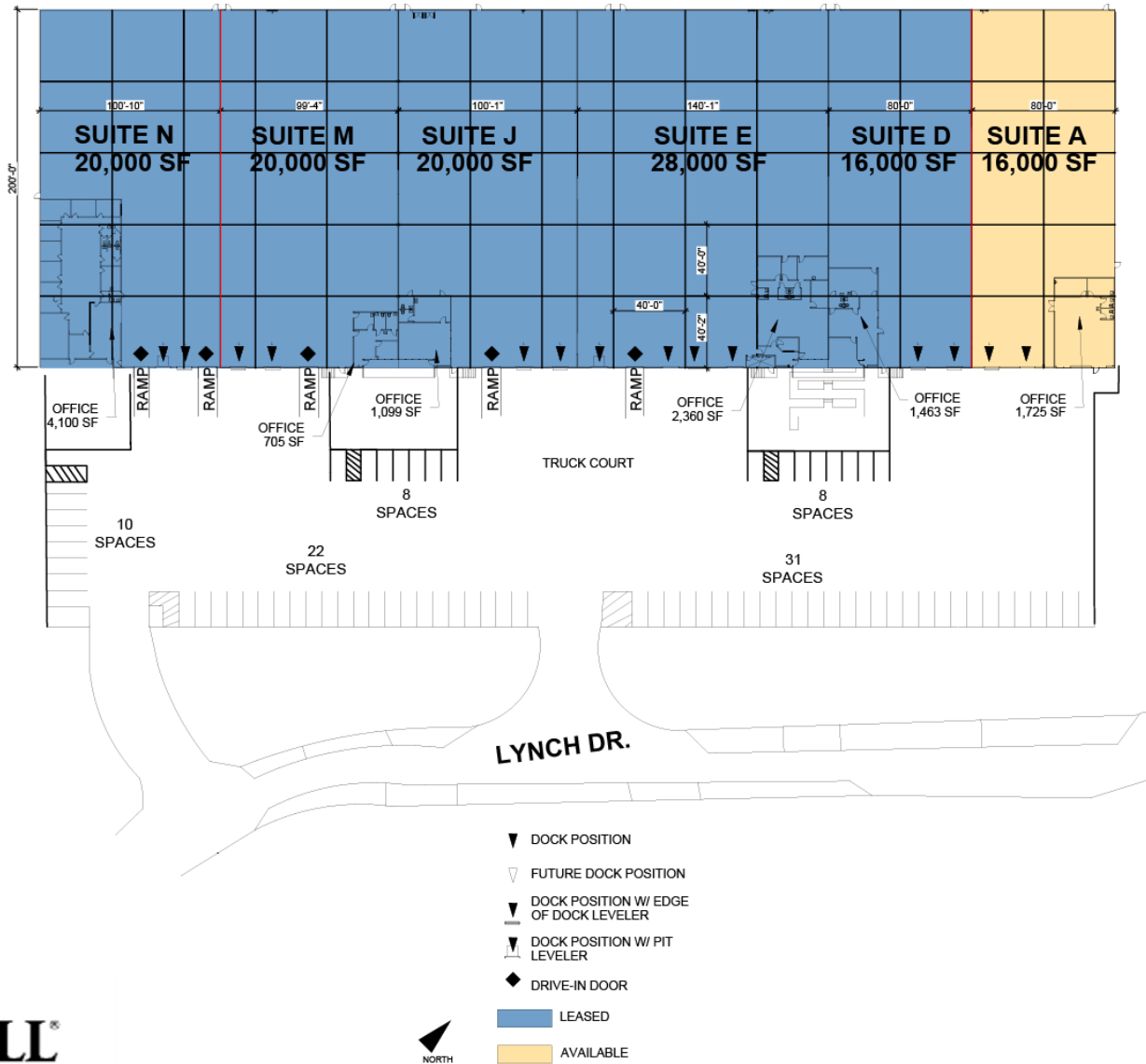
Prologis Essentials: your single-source service for efficient move-in and operations at [prologisessentials.com](https://www.prologisessentials.com)

16,000 SF

Industrial Space For Lease



Prologis Crosspoint Center Park



JLL
Matthew Greer, CCIM, SIOR
Matthew.greer@am.jll.com
ph +1 704 804 5762
cell +1 704 277 5675
650 S. Tryon Street
Suite 600
Charlotte, NC 28202 USA

JLL
Jay Hill
Jay.hill@am.jll.com
Ph +1 704 804 5754
cell +1 757 817 0333
650 S. Tryon St
Suite 600
Charlotte, NC 28202 USA

JLL
John Cashion, SIOR
John.Cashion@am.jll.com
ph +1 704 804 5780
cell +1 704 507 3188
650 S. Tryon St
Suite 600
Charlotte, NC 28202 USA

Prologis
Caitlin Ciniero
cciniero@prologis.com
ph +1 980 422 0807
cell +1 443 745 6463
1900 South Blvd
Suite 302
Charlotte, NC 28203 USA

Prologis
Todd Summerfield
tsummerfield@prologis.com
ph +1 704 426 8002
cell +1 410 441-1145
1900 South Blvd
Suite 302
Charlotte, NC 28203 USA

Prologis Essentials: your single-source service for efficient move-in and operations at prologisessentials.com

www.prologis.com
No warranty or representation, expressed or implied, is made as to the accuracy of the information contained herein, and same is submitted subject to error and omissions.