

±30,240 s.f. for sublease

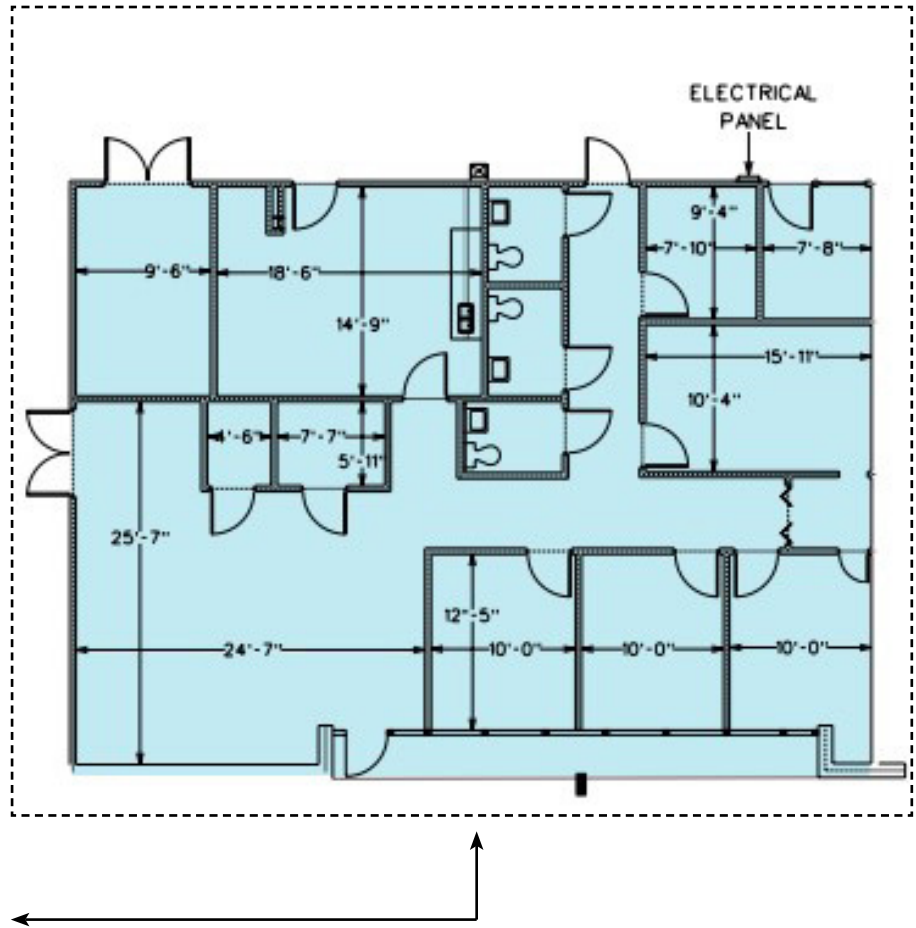
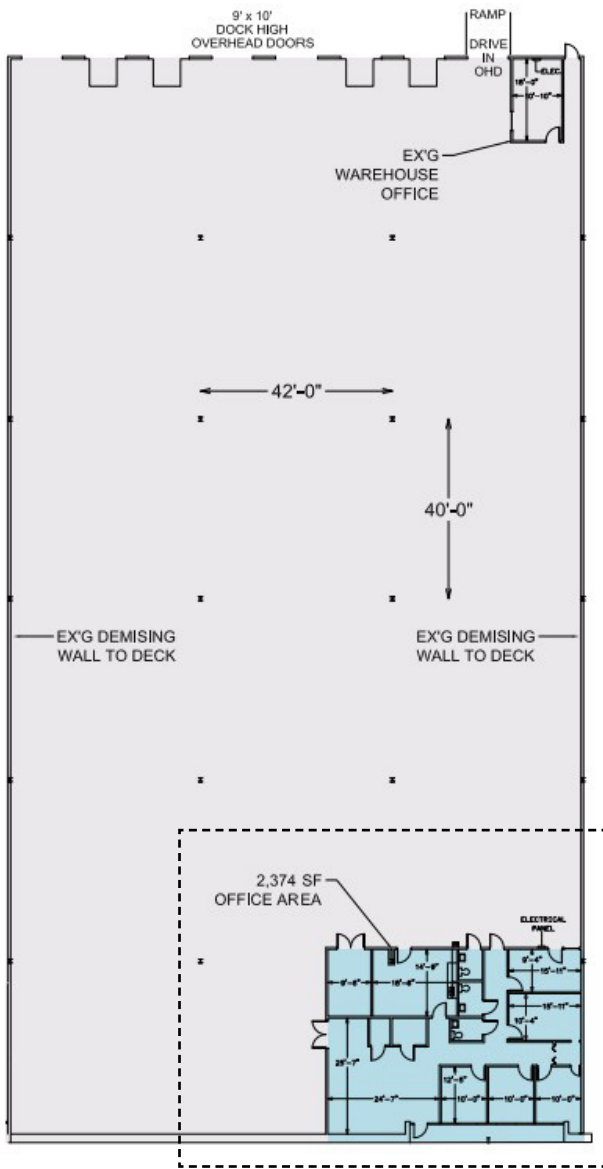


# Northpark Business Park

**6965-H Northpark Blvd.**

Charlotte, NC 28273

**Jay Hill**  
Vice President  
704 804 5754  
[jay.hill@jll.com](mailto:jay.hill@jll.com)



## Property specifications

<b>Building size</b>	± 162,520 SF	<b>OPEX</b>	\$1.69/SF
<b>Available s.f.</b>	± 30,240 SF	<b>Location</b>	I-485 ± 4 miles
<b>Office s.f.</b>	± 2,373 SF		I-77 ±0.9 miles
<b>Clear Height</b>	24'		I-85 ±3.5 miles
<b>Dock High Doors</b>	7 (4 pit levelers)		CLT Airport ± 9 miles
<b>Drive In Doors</b>	1		
<b>Sprinklers</b>	ESFR		
<b>Column Spacing</b>	42' x 40'		
<b>Availability</b>	12/1/2023		
<b>Lease EXP</b>	6/30/2025		



**Jay Hill**  
 Vice President  
 704 804 5754  
 jay.hill@jll.com