

12,000 SF

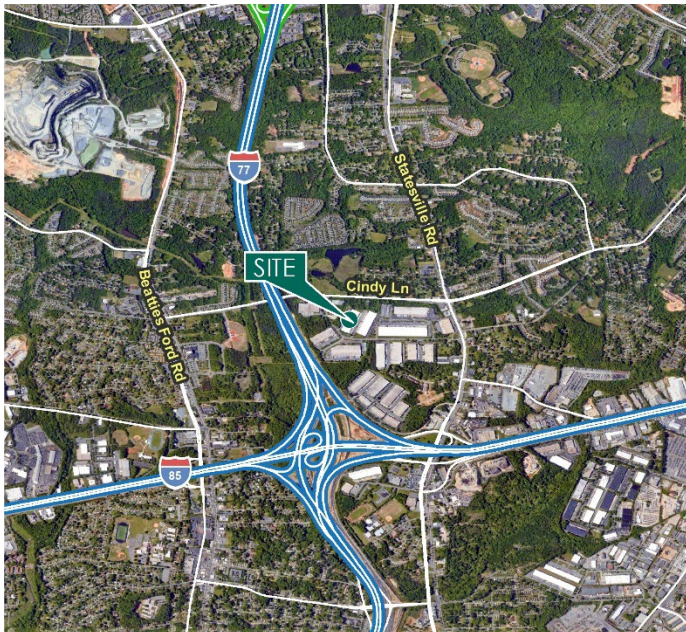
Industrial Space For Lease



Prologis Crosspoint Center Park 2701



2701 Hutchison McDonald Road, Suite M
Charlotte, NC 28269 USA



LOCATION

- Immediate access to Interstate I-77 and I-85
- 10 minutes from Charlotte Douglas International Airport
- Strategic distribution location in North Submarket
- 6 miles to Charlotte Central Business District

FACILITY

- 128,000 total SF
- 12,000 available SF
- 1,319 office SF
- 24' clear height
- 2 dock doors
- 1 drive-in door (10' X 12')
- 200' building depth
- 40' x 40' column spacing
- ESFR sprinkler system
- LED lighting

ADVANTAGES AND AMENITIES

- Professionally landscaped, controlled park environment
- Prologis Clear Lease-a simplified lease that fixes operating and capital expenses for the entire lease term
- Efficient and cost effective warehouse solutions through Prologis

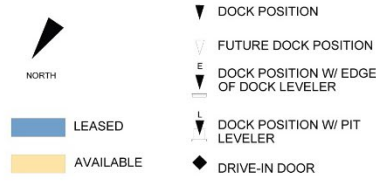
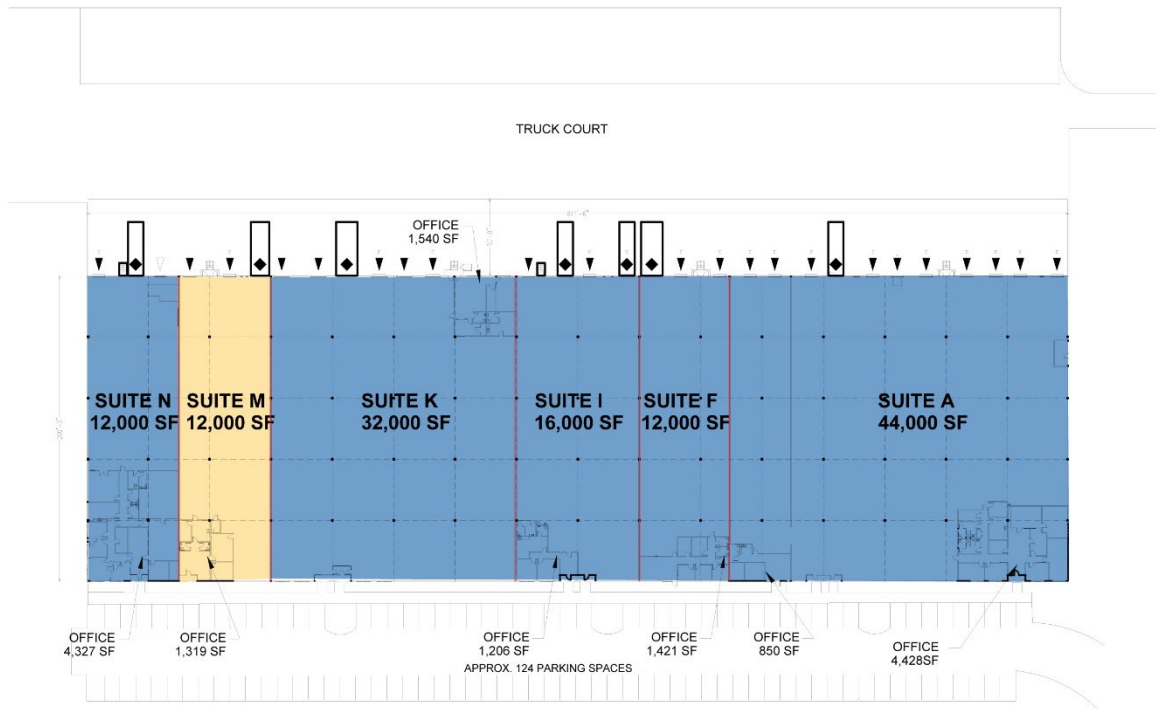
Prologis Essentials: your single-source service for efficient move-in and operations at [prologisessentials.com](https://www.prologisessentials.com)

12,000 SF

Industrial Space For Lease



Prologis Crosspoint Center Park 2701



JLL
Matthew Greer, SIOR,CCIM
Matthew.greer@am.jll.com
ph +1 704 804 5762
cell +1 704 277 5675
650 S. Tryon St
Suite 600
Charlotte, NC 28209 USA

JLL
Jay Hill
Jay.hill@am.jll.com
Ph +1 704 804 5754
cell +1 757 817 0333
650 S. Tryon St
Suite 600
Charlotte, NC 28202 USA

JLL
John Cashion
John.Cashion@am.jll.com
Ph +1 704 804 5780
cell +1 704 507 3188
650 S. Tryon St
Suite 600
Charlotte, NC 28202 USA

Prologis
Caitlin Ciniero
cciniero@prologis.com
ph +1 980 422 0807
cell +1 443 745 6463
1900 South Blvd
Suite 302
Charlotte, NC 28203 USA

Prologis
Todd Summerfield
tsummerfield@prologis.com
ph +1 704 426 8002
cell +1 410 441-1145
1900 South Blvd
Suite 302
Charlotte, NC 28203 USA

Prologis Essentials: your single-source service for efficient move-in and operations at [prologisessentials.com](https://www.prologisessentials.com)

No warranty or representation, expressed or implied, is made as to the accuracy of the information contained herein, and same is submitted subject to error and omissions.